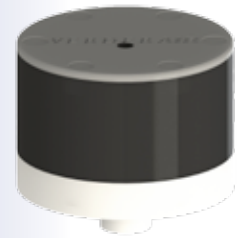


Verderair

PD-P40



PD-P40



VERDERAIR

Technical data PD-P40

Nominal port size	PD-P40 xx xx TN	1 1/2" NPT male
	PD-P40 xx xx FS	Flanged DIN DN40, ANSI 1 1/2"
Air inlet		R 1/4"
Weight [lbs]	PD-P40 EA xx TN	4,6
	PD-P40 EG xx TN	4,1
	PD-P40 TA xx TN	6,3
	PD-P40 TG xx TN	5,8
	PD-P40 GG xx TN	4,1
	PD-P40 UG xx TN	5,7
	PD-P40 EA xx FS	4,9
	PD-P40 EG xx FS	4,4
	PD-P40 TA xx FS	7
	PD-P40 TG xx FS	6,5
	PD-P40 GG xx FS	4,4
	PD-P40 UG xx FS	6,4
Max. operation pressure [PSI]		7
Max. operating temperature [°F]	PD-P40 EA or PD-P40 EG	70
	PD-P40 TA	120
	PD-P40 GG	70
	PD-P40 TG or PD-P40 UG	70

CODE PD-P40 No.1 No.2 No.3 No.4

No.1 Liquid Housing

- E = Polyethylene (PE UHMW)
-  G = Conductive Polyethylene (PE UHMW)
- T = PTFE
-  U = Conductive PTFE

no.2 Air Section

-  G = Conductive Polyethylene (PE UHMW)
- A = Polyamide

No.3 Diaphragm

- EO = EPDM Overmolded
- TO = PTFE Overmolded


No.4 Fluid Connection

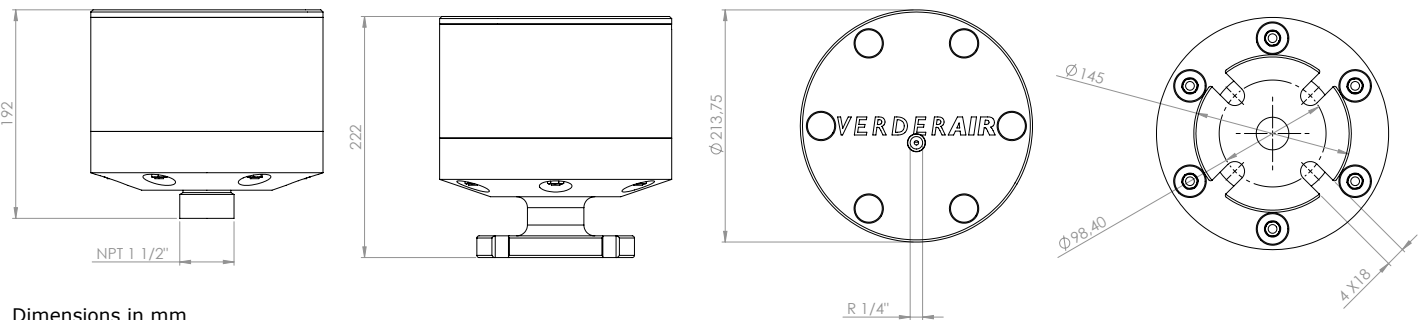
- TN = NPT Threaded male
- FS = Flanged slotted for DIN/ANSI/JIS

Note: Not all combinations are available

EXAMPLE PUMP TYPE

EXAMPLE : PD-P40EA EO TN

 II 2GD c II B T70



Dimensions in mm

PD-P40_Techno_Rev01-2013_UK_(eu)

Find your local supplier at www.verderair.com

VERDER
passion for pumps