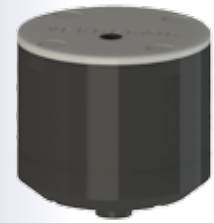


# Verderair

## PD-P15



PD-P15



VERDERAIR

### Technical data PD-P15

|                                 |                        |                             |
|---------------------------------|------------------------|-----------------------------|
| Nominal port size               | PD-P15 xx xx TN        | 1/2" NPT male               |
|                                 | PD-P15 xx xx FS        | Flanged DIN DN15, ANSI 1/2" |
| Air inlet                       |                        | R 1/8"                      |
| Weight [kg]                     | PD-P15 EA xx TN        | 0,6                         |
|                                 | PD-P15 EG xx TN        | 0,8                         |
|                                 | PD-P15 TA xx TN        | 1,2                         |
|                                 | PD-P15 TG xx TN        | 1,1                         |
|                                 | PD-P15 GG xx TN        | 0,8                         |
|                                 | PD-P15 UG xx TN        | 1                           |
|                                 | PD-P15 EA xx FS        | 0,9                         |
|                                 | PD-P15 EG xx FS        | 0,9                         |
|                                 | PD-P15 TA xx FS        | 1,4                         |
|                                 | PD-P15 TG xx FS        | 1,3                         |
|                                 | PD-P15 GG xx FS        | 0,8                         |
| PD-P15 UG xx FS                 | 1,2                    |                             |
| Max. operation pressure [Bar]   |                        | 7                           |
| Max. operating temperature [°C] | PD-P15 EA or PD-P15 EG | 70                          |
|                                 | PD-P15 TA              | 120                         |
|                                 | PD-P15 GG              | 70                          |
|                                 | PD-P15 TG or PD-P15 UG | 70                          |

### CODE PD-P15 No.1 No.2 No.3 No.4

#### No.1 Liquid Housing

- E = Polyethylene (PE UHMW)
-  G = Conductive Polyethylene (PE UHMW)
- T = PTFE
-  U = Conductive PTFE

#### no.2 Air Section

-  G = Conductive Polyethylene (PE UHMW)
- A = Polyamide

#### No.3 Diaphragm

- EO = EPDM Overmolded
- TO = PTFE Overmolded


#### No.4 Fluid Connection

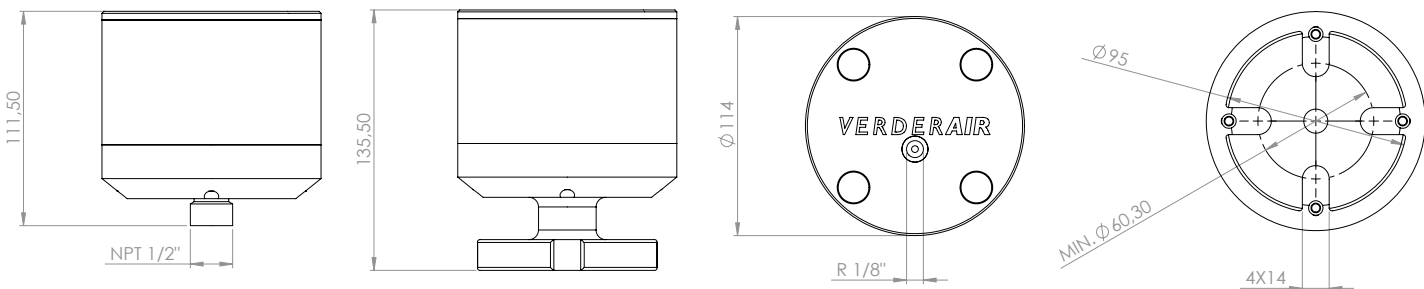
- TN = NPT Threaded male
- FS = Flanged slotted for DIN/ANSI/JIS

**Note: Not all combinations are available**

EXAMPLE PUMP TYPE

EXAMPLE : PD-P15EA EO TN

 II 2GD c II B T70



Dimensions in mm

Find your local supplier at [www.verderair.com](http://www.verderair.com)

**VERDER**  
passion for pumps